

Solution Brief

Transforming Employee Experience



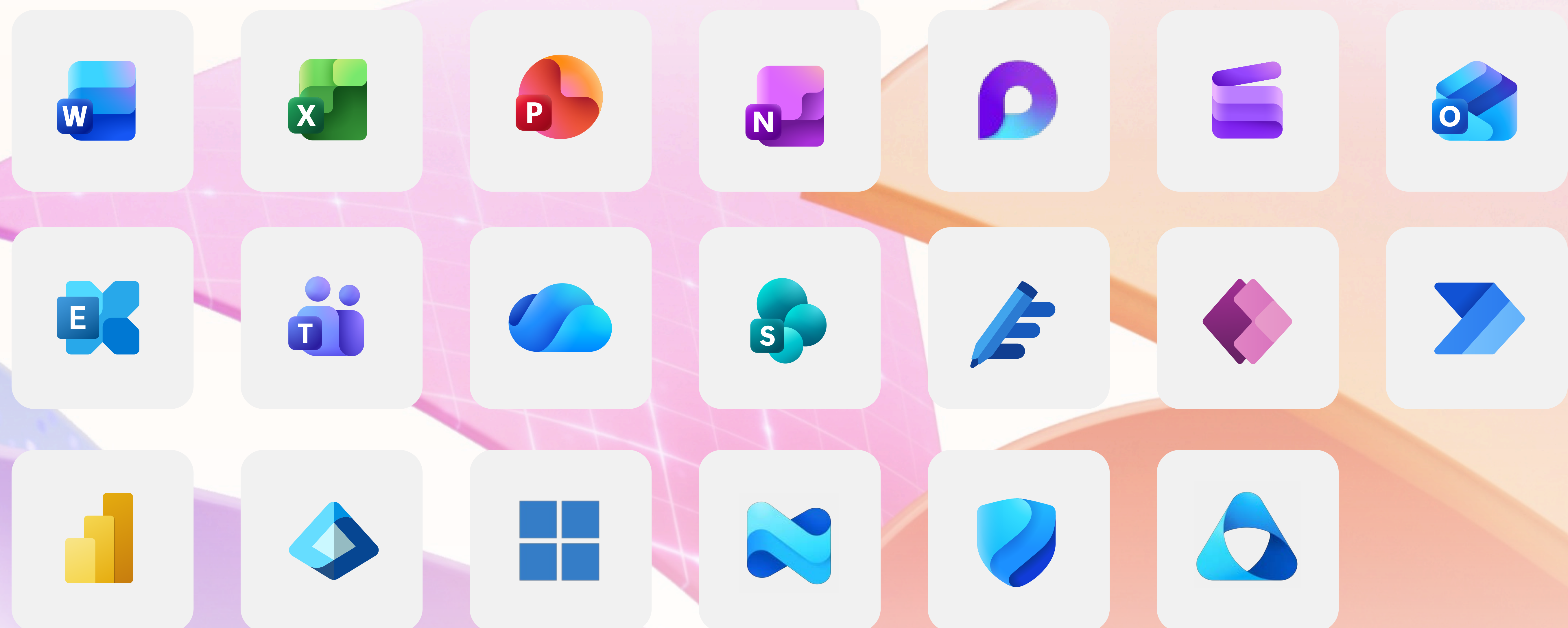
Technology is driving change at a faster rate than ever, yet many organizations are having trouble keeping pace.

According to Microsoft's 2025 Work Trend Index, 53% of business leaders acknowledge that productivity must increase, yet 80% of the global workforce reports lacking the time or energy to meet current demands. This "capacity gap" results from fragmented workflows, constant context-switching, and low-value tasks that crowd out meaningful work.

The evolving threat landscape amplifies these challenges. Increasingly sophisticated threats strain traditional security architectures, and security teams often operate across siloed, disconnected point solutions, with insufficient time, context, or tooling to respond at the speed that threats demand.

Both challenges require the same response: unified ecosystems where intelligence and security are embedded. Organizations that consolidate tooling gain cross-domain visibility, shared context, and integrated intelligence that are sorely needed in today's fast-evolving digital workplace.

Microsoft 365 E5 delivers the most comprehensive edition of the Microsoft 365 suite, built to help organizations work smarter, stay protected, and lead with AI. M365 E5 is providing the utilities to help secure an organization against Rogue AI and help to improve security posture. Reduce vendor overlap, reduce complexity for management, and consolidate on the best in class security/governance platform.





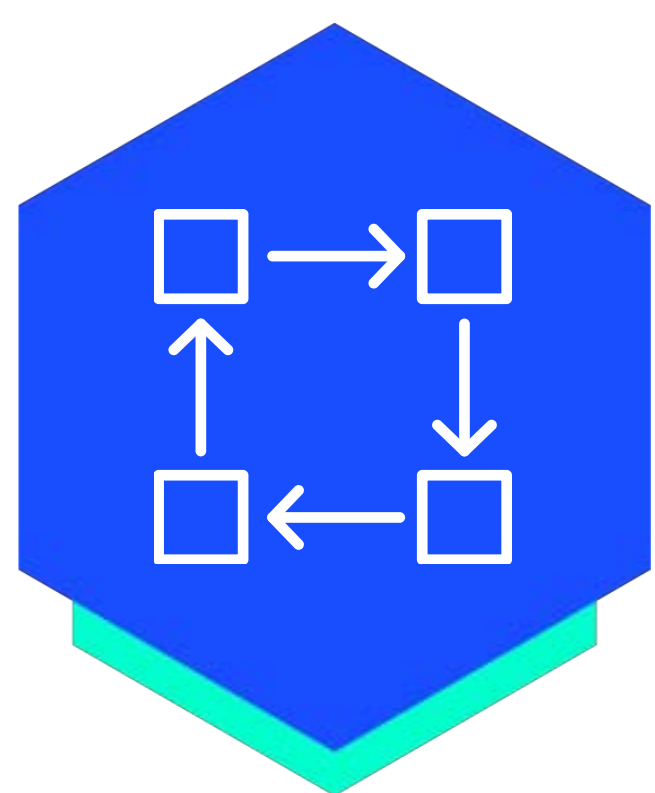
Supercharge Productivity & Streamline Workflows

Microsoft 365 E5 empowers teams with the full desktop, web, and mobile suite of Word, Excel, PowerPoint, Outlook, OneNote, alongside Microsoft Loop for collaborative workspaces and Clipchamp for professional video creation. E5 users also gain access to premium tools and solutions designed to level up their productivity:

- **Power BI Pro** turns raw data into interactive dashboards and enterprise reports, which can be embedded directly into Teams channels and SharePoint sites.
- **Power Apps and Power Automate for Microsoft 365** enable anyone to build custom business applications and automated workflows without writing code.
- **Dataverse for Teams** provides a low-code data platform for building custom apps, bots, workflows, and dashboards directly within Teams.
- **Microsoft Editor** enables confident writing across documents and email with grammar, spelling, clarity, and vocabulary checks built directly into the Microsoft 365 experience.
- **Microsoft Teams Phone Standard** delivers a complete cloud-based telephony system built natively into the Teams environment organizations already use daily.
- **Audio Conferencing** enables meeting participants to join Teams calls by dialing in from any phone, ensuring connectivity regardless of device or internet availability.
- **Microsoft Adoption Score and Secure Score** deliver continuous, quantified visibility into how the organization uses Microsoft 365 and the strength of its security posture, with prioritized recommendations for improvement across both dimensions.

Together, these capabilities consolidate the tools teams need to communicate, build, automate, and analyze into a single, coherent productivity environment.





Connect & Collaborate

E5 provides the full Microsoft 365 communication and collaboration ecosystem, giving teams a connected environment to engage, share, and stay aligned regardless of location or device:

- **Microsoft Teams** brings chat, calling, meetings, and shared workspaces into one hub, giving teams instant access to people, tools, and resources in a single environment.
- **Outlook and Exchange** keep email, calendar, and files unified in one secure app, with hosted business email on a custom domain backed by enterprise-grade reliability.
- **Microsoft Teams Phone and Audio Conferencing** enable users to make and receive external calls and join meetings from any phone, delivering full PBX and PSTN capabilities natively in the cloud.
- **OneDrive and SharePoint (P2)** provide cloud storage and team content management so employees can access, share, and collaborate on files and sites from anywhere.
- **Microsoft Bookings and Shifts** simplify scheduling across the organization, from external appointment management with clients and customers to internal shift planning and time tracking for frontline teams.
- **Microsoft Search** helps employees quickly surface files, people, conversations, and internal sites throughout the entire Microsoft 365 environment.
- **Microsoft Edge for Business** delivers a secure, enterprise-optimized browser with built-in AI capabilities designed to keep employees productive without leaving the work context.
- **Viva Learning, Viva Engage, and Viva Insights** support the employee experience beyond day-to-day tasks, connecting people to learning content, internal communities, and privacy-protected personal wellbeing insights.

Together, these capabilities ensure that every employee, whether in the office, at home, or in the field, has a consistent experience built on a single trusted platform.



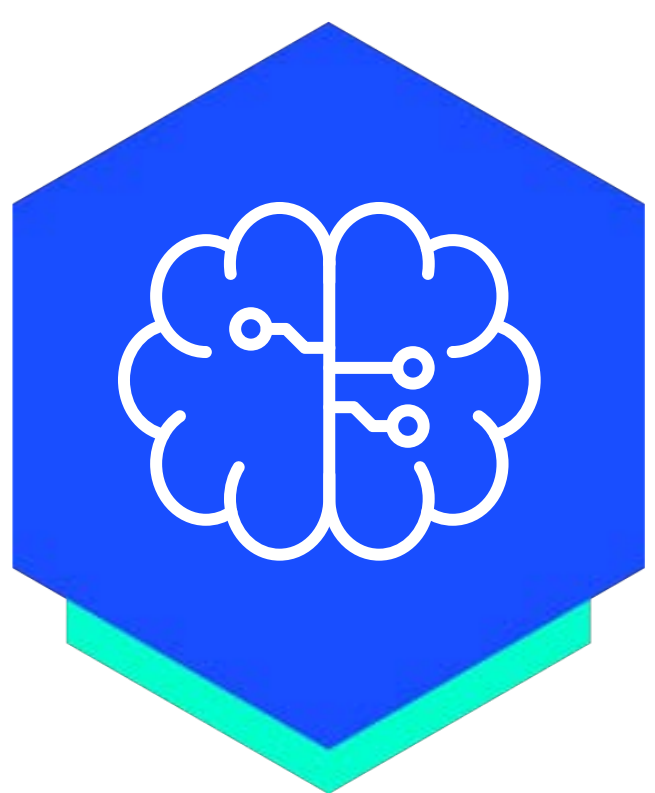


Simplify Security & Modernize Protection

E5 delivers a comprehensive, integrated security platform that spans identity, endpoint, email, cloud apps, and data:

- **Microsoft Defender XDR** correlates threat signals across endpoints, identity, email, and SaaS apps to enable automated, cross-domain attack disruption.
- **Microsoft Defender for Identity (ITDR)** provides hybrid identity protection that detects credential compromise, lateral movement, and privilege escalation in real time.
- **Microsoft Defender for Endpoint Plan 2** delivers advanced behavioral analytics, threat hunting, and vulnerability management across the full device estate.
- **Microsoft Defender for Cloud Apps** provides full CASB visibility in the SaaS environment, covering shadow IT discovery, anomalous behavior detection, and data exfiltration prevention.
- **Microsoft Defender for Office 365 Plan 2** protects the email and collaboration surface with advanced anti-phishing, attack simulation training, and automated investigation.
- **Malicious OAuth App Protection** detects and blocks risky third-party app registrations that can be used as unauthorized backdoor access points.
- **Microsoft Entra ID P2** enforces risk-based conditional access, Privileged Identity Management, and Identity Protection to continuously verify every access request under a Zero Trust model.

By integrating multiple tools into one unified platform, E5 gives teams a more powerful, modern security suite, without the fragmentation that comes with multi-vendor point solutions.

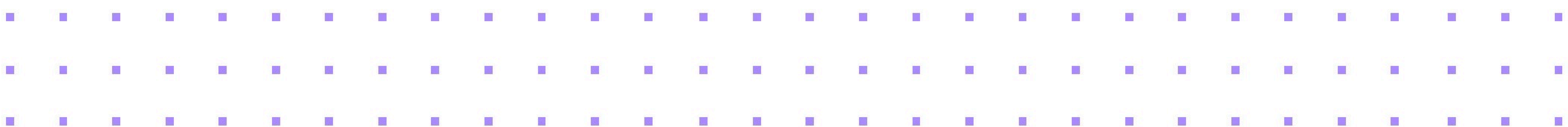


Amplify with AI-Powered Intelligence

E5 brings AI-powered assistance and automation directly into daily workflows, included as part of the license. Organizations gain access to an expanding set of AI capabilities purpose-built for the enterprise:

- **Microsoft 365 Copilot Chat** provides secure AI chat powered by the latest large language models, enabling users to research, summarize, draft, and analyze directly within the Microsoft 365 environment.
- **Security Copilot** is included for E5 tenants with dedicated Security Compute Units, embedding AI-driven agents natively into Defender, Entra, Intune, and Purview to handle alert triage, identity governance, and data risk remediation.
- **Copilot Agents** can be deployed from a prebuilt library or custom-built through Agent Builder, automating multi-step processes across knowledge management, compliance, IT support, and specialized business workflows.
- **Microsoft Purview AI Hub** provides visibility and governance over the organization's AI usage, ensuring data shared with AI tools is protected and compliant.

Together, these capabilities transform Microsoft 365 E5 into an intelligent enterprise platform where AI is a native part of how work gets done, secured, and governed.



Why Now?

Regulatory obligations are tightening, AI is reshaping how work gets done, and the cost of disconnected tooling increases every year. To keep pace, organizations need solutions that boost productivity, simplify and strengthen security, and drive impact through intelligent technology.

Microsoft 365 E5 brings productivity, security, IT management, and intelligence together into one deeply integrated product suite, positioning organizations to lead at the forefront of change.

Upgrade to E5 with Logicalis

Microsoft 365 E5 represents a significant platform shift, and realizing its full value requires more than licensing. Logicalis brings deep Microsoft expertise and a structured deployment methodology to ensure E5 capabilities are activated, configured, and adopted in a way that maps directly to each organization's priorities and risk profile.

From initial assessment through to managed operations, Logicalis works alongside IT and security teams to accelerate time-to-value across every pillar of E5. Whether the priority is consolidating security tooling, enabling Copilot-ready infrastructure, or meeting a compliance deadline, Logicalis has the specializations and the experience to deliver.

To find out how we can help you get started, **schedule a free executive briefing today.**

Why Logicalis?

Microsoft Partner 25+ years as a Microsoft Partner, with a track record spanning enterprise licensing, cloud transformation, and managed security services

Certifications & Specializations Microsoft Solutions Partner across Modern Work, Security, and Azure, with advanced specializations in Threat Protection, Identity and Access Management, and Information Protection

Global Reach A global team of 6,000+ technology professionals spanning 30+ countries in the Americas, Europe, Asia Pacific, and Africa

Security Practice Dedicated Microsoft Security practice with certified professionals delivering XDR, Zero Trust, and Purview deployments for enterprise and regulated industry clients

Managed Services 24/7 managed detection and response, endpoint management, and compliance monitoring built on the Microsoft Security stack