



## HPE ProLiant Compute

Gen12 brings next-level performance, efficiency, and security.

HPE ProLiant Compute brings a new level of performance, efficiency, and security to IT operations. With the pressure to deploy AI applications and rethink virtualization strategies, IT needs advanced capabilities to maximize productivity and performance. With the addition of new Gen12 systems, Hewlett Packard Enterprise has a full, modern portfolio of hardware and software solutions that provide a secure foundation for the next generation of workloads while increasing power efficiency and streamlining operations.

## Next-level security

### Your challenge

Enterprises continually face the threat of data breaches, which can severely impact operations, costs, performance, and reputation.

### HPE solution

## Protect against attack with multilayer security

HPE iLO multilayer silicon root of trust protects servers from manufacturing to end of life and provides compliance readiness for future quantum-computing attacks.



Figure 1. HPE iLO 7

## New security innovations

**Multi-layered protection with secure enclave to prevent tampering**, adding a new hardware-based vault within HPE iLO 7, for more secure storage of server encryption keys.

**First industry standard servers to meet the requirements for FIPS 140-3 Level 3** and will be pursuing certification, attained through the HPE iLO 7 with secure enclave capability for enhanced physical and digital intrusion resistance<sup>1</sup>

**First server to support NIST and CNSA 2.0 quantum resistance requirement** with secure firmware signing against future quantum computing attacks embedded into HPE iLO 7 Silicon Root of Trust<sup>2</sup>

**Trusted supply chain available now at rack and server level**—To speed deployment, reduce vulnerabilities, and offer full rack-level integrity during transit through our secure supply chain facilities



<sup>1, 2</sup> As at January 27, 2025.



## Optimized with more performance and efficiency

### Your challenge

Enabling new use cases and workloads such as AI and edge while addressing inefficiencies with existing virtualization, legacy infrastructure, and rising energy bills

### HPE solution

## Up to 41% better performance per watt than Gen10 systems

Get the higher performance needed for new AI and edge workloads, and boost VDI efficiency—all while saving space and energy



Figure 2. HPE ProLiant DL380a Gen12 server

## New performance and efficiency innovations

**Consolidate and save**, with up to 7:1 consolidation compared to Gen10 and up to 65% in power savings. Free up data center capacity and reduce energy consumption<sup>3</sup>

**AI-optimized server platforms** with HPE ProLiant Compute DL380a Gen12 with NVIDIA® H200 NVL and first-to-market HPE ProLiant Compute DL384 Gen12 with NVIDIA GH200 NVL2, 144 GB

**Direct Liquid Cooling (DLC)** will be available on all Intel based 1 and 2-socket Gen12 rack servers delivering superior cooling efficiency for even the highest performance workload needs.

**HPE offers automated, on-demand carbon footprint reporting** with HPE Power Advisor with anticipated HPE product carbon footprint before you order and ongoing sustainability insights within HPE Compute Ops Management

The HPE ProLiant Compute portfolio is optimized for performance, efficiency, and cost with tailored solutions to power workloads from VDI to AI. With ever-increasing power demands on data centers and purpose-built compute for AI, superior cooling innovations deliver energy efficiency without compromising performance or productivity. To help organizations make informed choices from preorder to deployment, on-demand carbon footprint reporting is available only from HPE to support your sustainability initiatives.

<sup>3</sup> SPEC and the names SPECrate are registered trademarks of the Standard Performance Evaluation Corporation (SPEC). The stated results (SPECrate2017\_int\_base: #36693 [1], #36691 [2], #20893 [3], #37007 [4]) are published as of 01-01-2025, see [spec.org](https://www.spec.org), and compared against a 48-core estimated Gen12 system. All rights reserved. Power savings based on the Thermal Design Power of the systems.



## Automated, AI-driven productivity

### Your challenge

Server operations are inefficient, time-consuming, costly, and lack visibility and insights

### HPE solution

## Boost IT productivity with new AI-driven insights.

Enable operators to react quicker and gain greater control, from forecasting energy costs to managing a global server footprint

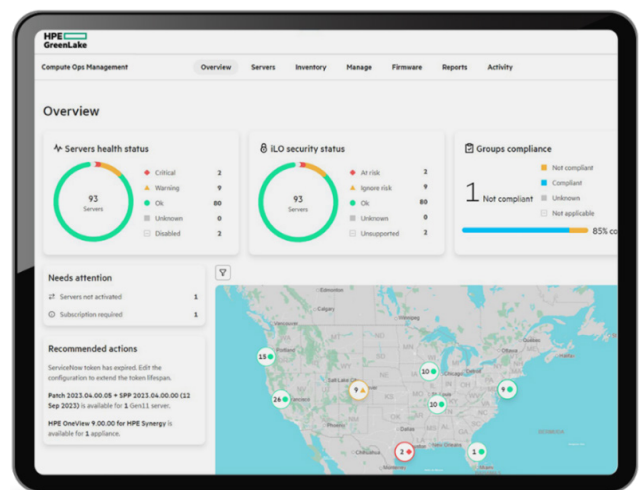


Figure 3. HPE Compute Ops Management dashboard

## New automated, AI-driven productivity innovations

**Predictive AI insights** to forecast future energy costs and carbon emissions with confidence

**Threshold-based alerting** to stay informed with timely alerts when critical energy and carbon limits are reached

**Improved map-based visibility** simplifies server management with a unified global map view and color-coded health status levels

**Multivendor management** via integration with third-party toolsets, for simplified, unified operations of diverse IT environments

**Faster single server management with new HPE iLO 7** with up to 30% decreased OS boot up time and 3x faster operations compared to previous HPE iLO

Help ensure smooth enterprise operations with proactive and predictive automation from data center to edge, leveraging a single management solution powered by AI-driven insights. Enable operators to react quicker and gain greater control, from forecasting energy costs to managing a global server footprint. Boost productivity of IT staff by quickly pinpointing problem areas through dashboards, intelligent alerts, and a global map view of all servers with status and activity.



## HPE ProLiant Compute Gen12— Engineered for your hybrid world

The HPE ProLiant Compute Gen12 is not just a server; it's a comprehensive solution designed to propel your enterprise into the future. With unmatched security, optimized performance, and AI-driven productivity, it equips your organization to handle the challenges of today and tomorrow.

For any enterprise, investing in the HPE ProLiant Compute means safeguarding your data and optimizing performance and productivity of your operations while supporting IT sustainability. It's a strategic move that helps ensure your enterprise remains at the forefront of technological advancements while achieving measurable business results.



### Discover Next-Level Compute with Logicalis and HPE

Logicalis has partnered with HPE since 1993 to help organizations of every size do more with HPE. With Logicalis Managed Services, you have the expertise, technical capabilities, and ongoing support to make the most of HPE, tackle your most pressing compute challenges, and drive your IT strategy forward.

To learn more about HPE ProLiant Compute Gen12 servers and Logicalis Managed Services, contact us today to schedule a free executive briefing.

[Explore Logicalis](#)



© Copyright 2025 Hewlett Packard Enterprise Development LP. The information contained herein is subject to change without notice. The only warranties for Hewlett Packard Enterprise products and services are set forth in the express warranty statements accompanying such products and services. Nothing herein should be construed as constituting an additional warranty. Hewlett Packard Enterprise shall not be liable for technical or editorial errors or omissions contained herein.

NVIDIA is a trademark and/or registered trademark of NVIDIA Corporation in the U.S. and other countries. All third-party marks are property of their respective owners.

a00144756ENW