

**Solution Brief**

**Bring Your  
Evolved Cloud to Life  
with NetApp BlueXP**





## Build, Protect, and Govern Your Hybrid Multicloud Data Estate with a Single Tool

As your data estate expands across on-premises and multiple clouds, it becomes increasingly challenging to manage. Different data and storage systems from different providers create complexity and interoperability issues. IT teams must also maintain up-to-date skills in each of these solutions, draining valuable time and resources from more important IT activities.

Now, you can address these challenges with a single tool: BlueXP.

BlueXP helps you evolve your approach to the cloud by unifying all of NetApp's integrated technologies into a single product that gives you the power to deploy, automate, discover, manage, protect, govern, and optimize data, infrastructure, and the processes that support them.

With Logicalis Professional and Managed Services, you can leverage our extensive experience with NetApp and our global teams of certified NetApp experts to implement, manage, maintain, and optimize BlueXP – so you can spend less time on IT infrastructure and more time on the business activities that matter most.

## Build and Operate a Hybrid Multicloud Estate Through a Single Control Plane



**Build** the foundation of your data estate by discovering, deploying, and managing storage



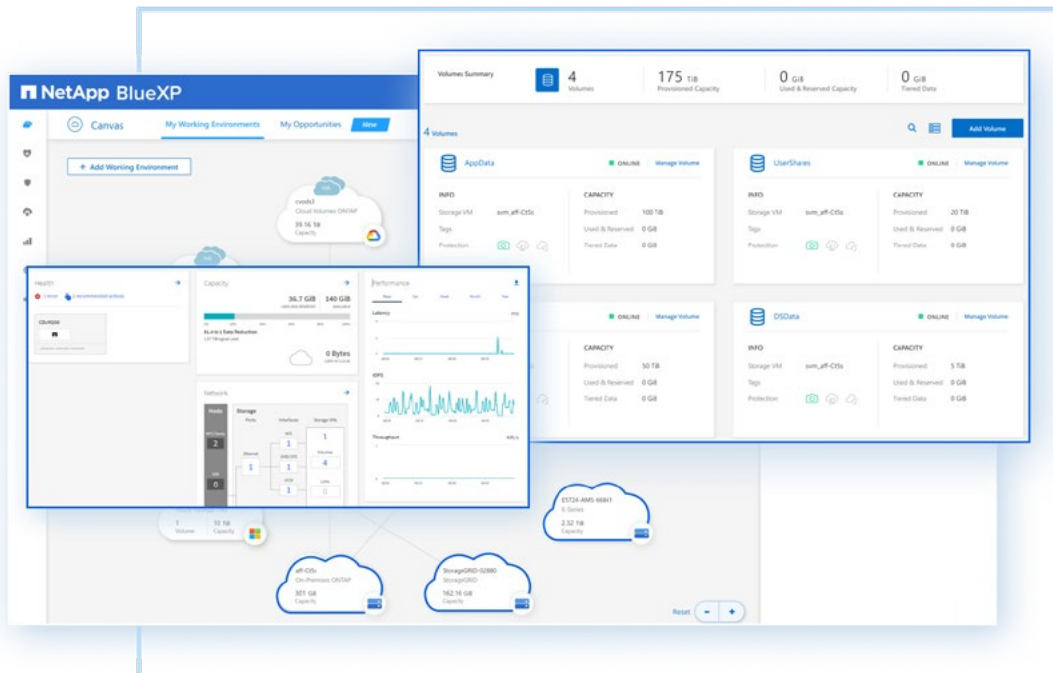
**Protect** the data estate against data loss and cyber threats with enterprise-grade security



**Govern** your data estate with full visibility into health, usage, and performance

“By taking an evolved cloud approach, customers can integrate cloud into their architecture and operations, eliminate complexity and increase their speed of innovation to deliver quickly on the business outcomes that matter most.”

**George Kurian, CEO, NetApp**



Deploy and operate file, block and object storage on-premises with NetApp On-Premises

<https://bluexp.netapp.com/netapp-on-premises>

## BlueXP's Four Pillars of Data Management

BlueXP simplifies data management through four key capabilities: storage, mobility, protection, and analysis and control.

### Storage

#### NetApp On-Premises

Discover, configure, and operate your ONTAP, StorageGRID, and E/EF-Series systems as part of your hybrid multicloud data estate, while leveraging NetApp's data protection and governance capabilities.

#### Cloud Volumes ONTAP

Build storage for mission-critical applications, databases, containers, and user files on the cloud of your choice, with NetApp's enterprise-grade technology that provides security, resilience, high availability, and cost-performance.

#### Amazon FSx for ONTAP

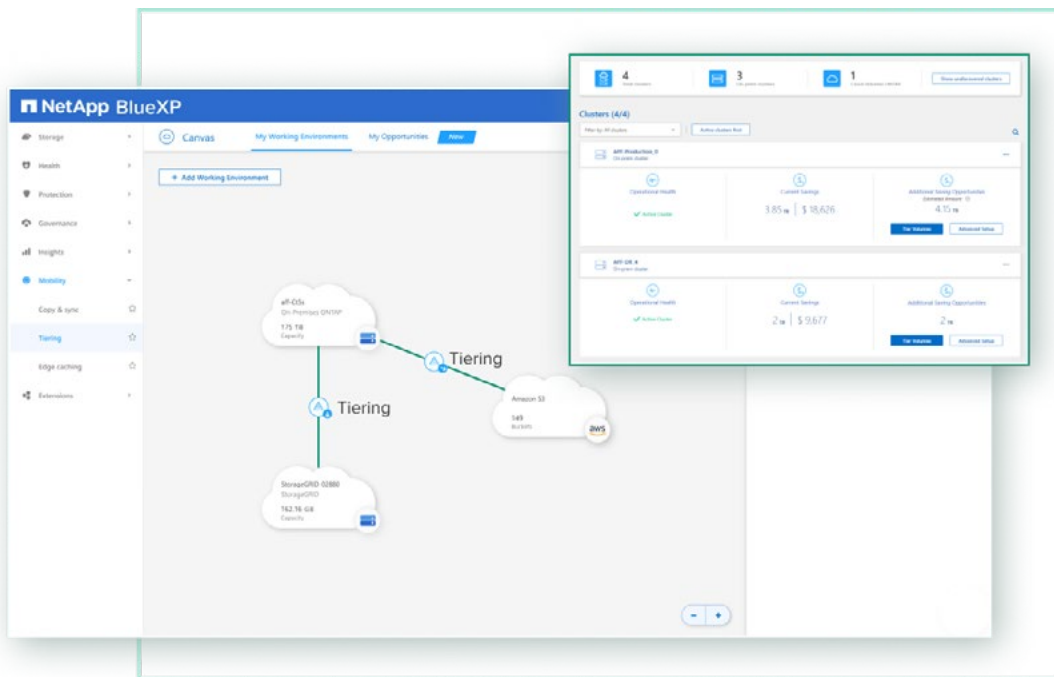
Amazon FSx for NetApp ONTAP provides fully managed, AWS-native NFS, SMB/CIFS, and iSCSI storage volumes for mission-critical applications, databases, containers, VMware Cloud datastores, and user files.

#### Native Azure Storage

Azure NetApp Files is a native Azure storage service that provides enterprise-grade NFS and SMB/CIFS storage volumes for mission-critical applications, SAP HANA, databases, HPC, web applications, and user files.

#### Native Google Cloud File Storage

Google Cloud Volumes Service provides enterprise-grade, Google Cloud-native NFS and SMB/CIFS storage volumes for mission-critical applications, SAP HANA, databases, containers, and user files, while adding BlueXP's data protection, analysis and control capabilities, and visibility into other storage environments.



Free up valuable space on your on-premises storage systems with BlueXP Tiering

<https://bluexp.netapp.com/cloud-tiering>

## Mobility

### Copy and Sync

Move data between different storage systems and services across your data estate, whether on-prem or in the cloud, and gain the ability to carry out a variety of data mobility projects, such as cloud migrations, data protection, archiving, data consolidation, and cloud bursting for processing and analytics.

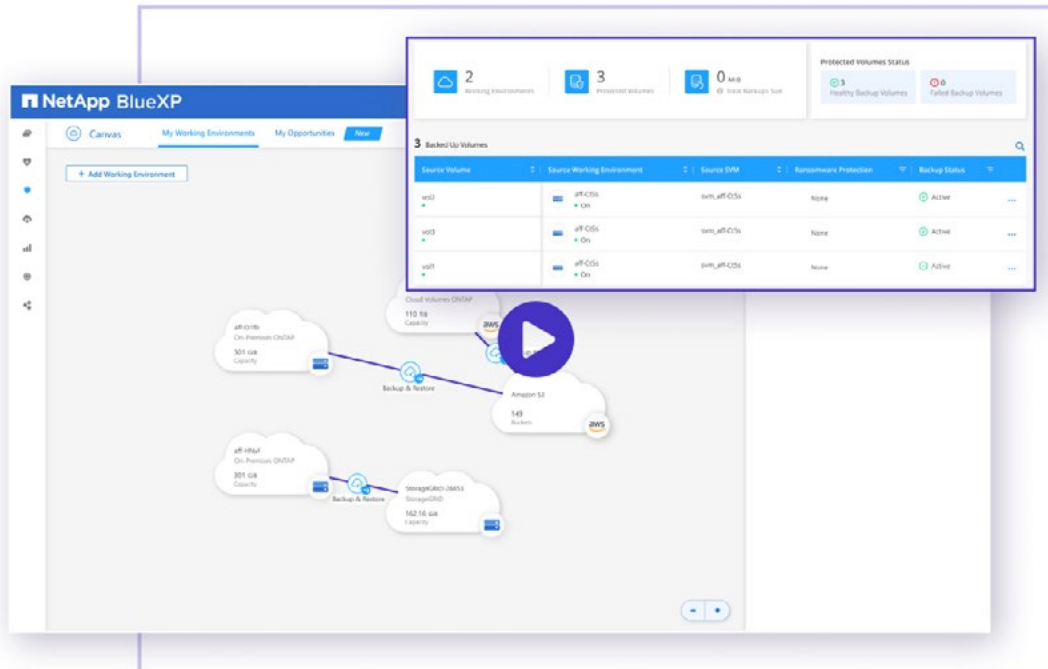
### Edge Caching

Edge caching maintains frequently accessed data in remote edge locations around the globe, enabling you to maintain central control over that data, while avoiding the latency typically associated with accessing data over WAN.

### Tiering

BlueXP expands your ONTAP storage capacity by moving infrequently used data to object storage of your choice, on-premises or in the cloud, and moves data automatically between ONTAP's primary tier and the most cost-efficient object storage capacity tier.





NetApp native backup and recovery for ONTAP workloads

<https://bluexp.netapp.com/cloud-backup>

## Protection

### Backup and Recovery

BlueXP backup and recovery backs up on-premises and cloud-based ONTAP data to object storage, and secure copies of unstructured data, databases, VMs, and Kubernetes persistent volumes are automatically created and backed up to Amazon S3, Azure Blob Storage, Google Cloud Storage in the cloud, or StorageGRID appliances on-premises.

### Ransomware Protection

BlueXP's ransomware protection scans data sources on-premises and in the cloud, spots vulnerabilities, and provides security status, risk scoring, and actionable recommendations.

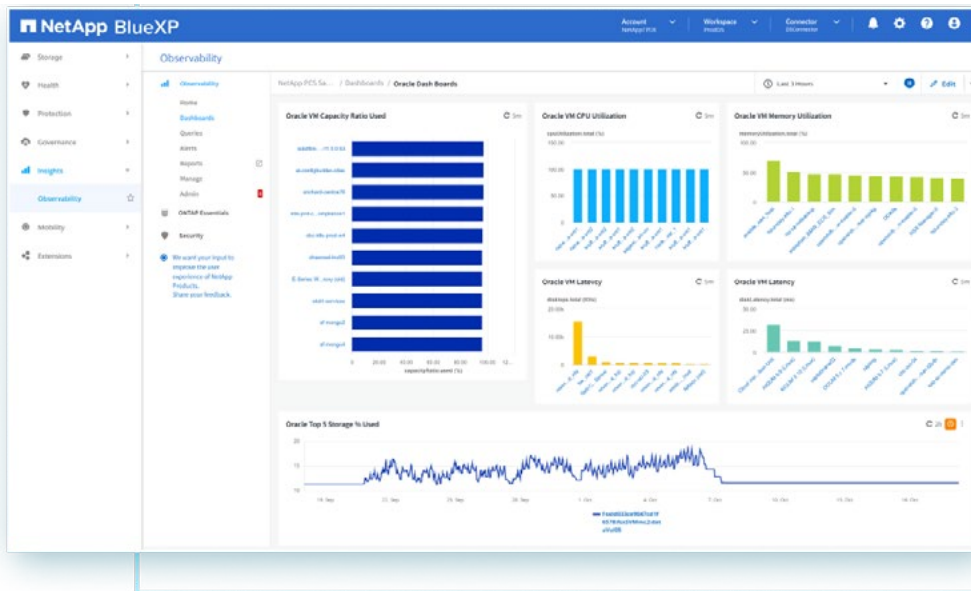
### Replication

NetApp SnapMirror technology replicates data to and from ONTAP on-premises, Cloud Volumes ONTAP, and Amazon FSx for NetApp ONTAP, providing secondary copies of ONTAP data to support your disaster recovery and backup strategy.

### Kubernetes

Kubernetes persistent volumes are backed up directly to object storage in the cloud - Amazon S3, Azure Blob storage, and Google Cloud Storage.





BlueXP infrastructure and application monitoring

<https://bluexp.netapp.com/cloud-insights>

## Analysis and Control

### Observability

Gain complete full-stack visibility into your infrastructure and applications, and easily monitor, troubleshoot, and optimize all of your resources across your hybrid multicloud data estate.

### Classification

BlueXP uses natural language processing (NLP) to scan and classify data, giving you actionable insights into your data to address compliance requirements, detect security vulnerabilities, optimize costs, and accelerate migration.

### Digital Advisor

The BlueXP digital advisor provides a single view into storage health and prescriptive guidance to help you address misconfigurations, security vulnerabilities, outdated firmware, rapid growth, and more.





## **Evolve Your Cloud with Logicalis and BlueXP**

With Logicalis and BlueXP, you can unlock the promise of the cloud by making data and storage operations simple, efficient, resilient, and performant. To find out how we can help you unlock the full potential of your hybrid multicloud data estate, connect with us today and schedule a free executive briefing.

### **Get in Touch**

[www.us.logicalis.com](http://www.us.logicalis.com)

866 456 4422

Visit our [Content Hub](#) focused on Hybrid Cloud solutions that maximize the value of your data, accelerate digital transformation, and drive growth.